

APPENDIX I

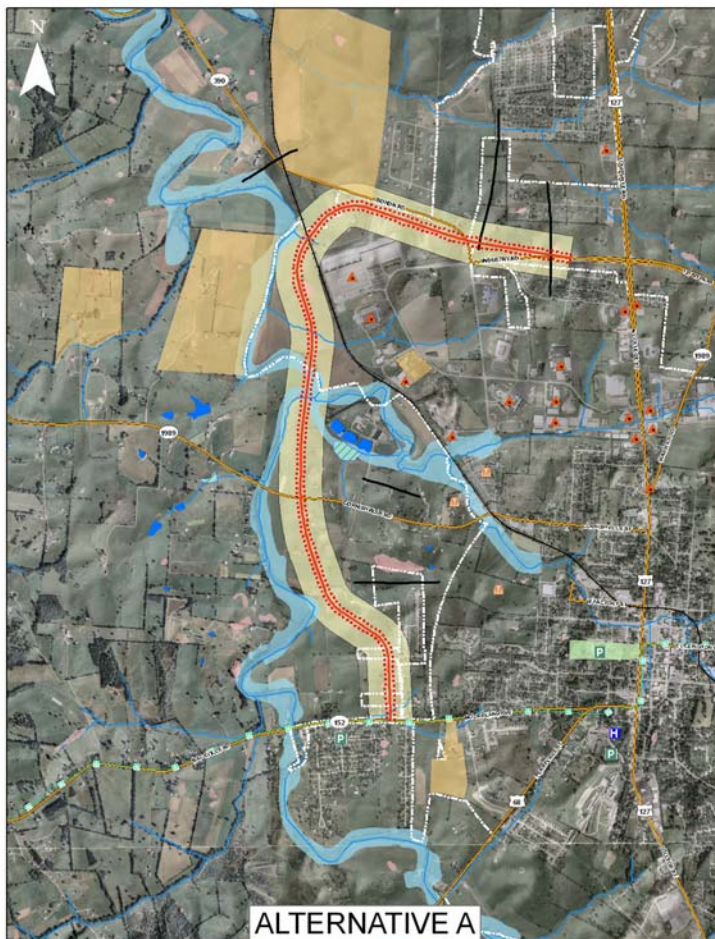
INITIAL NORTHWEST BYPASS ALTERNATIVES

Alternative A

Parks Potentially Impacted:	0
Historic Sites Potentially Impacted:	0
Acres of School Property Potentially Disturbed:	0
Prime Farmland Acres Potentially Impacted:	25
State Importance Farmland Acres Potentially Impacted:	35
Potential HAZMAT Impact:	None
Acres of Ponds Potentially Impacted:	0
Acres of Wetlands Potentially Impacted:	0
Acres of Floodplains Potentially Impacted:	3.5
Number of Streams Potentially Crossed:	6
Potential Length of Stream Crossings (Approximate):	1,300 feet
Number of Geologic Faults Potentially Crossed:	2
Number of Sinkholes Potentially Impacted:	3
Estimated Cost:	\$37.6 million

Satisfaction of Project Goals:

- Separate School and Industry Traffic: Good
- Emergency Response Time to Haggin Hospital: Good
- Grade Separated RR Crossing: Excellent
- Reduce Congestion on Existing Area Roadways: Fair to Poor
- Compatible with Future Possible Southwest Extension: Fair

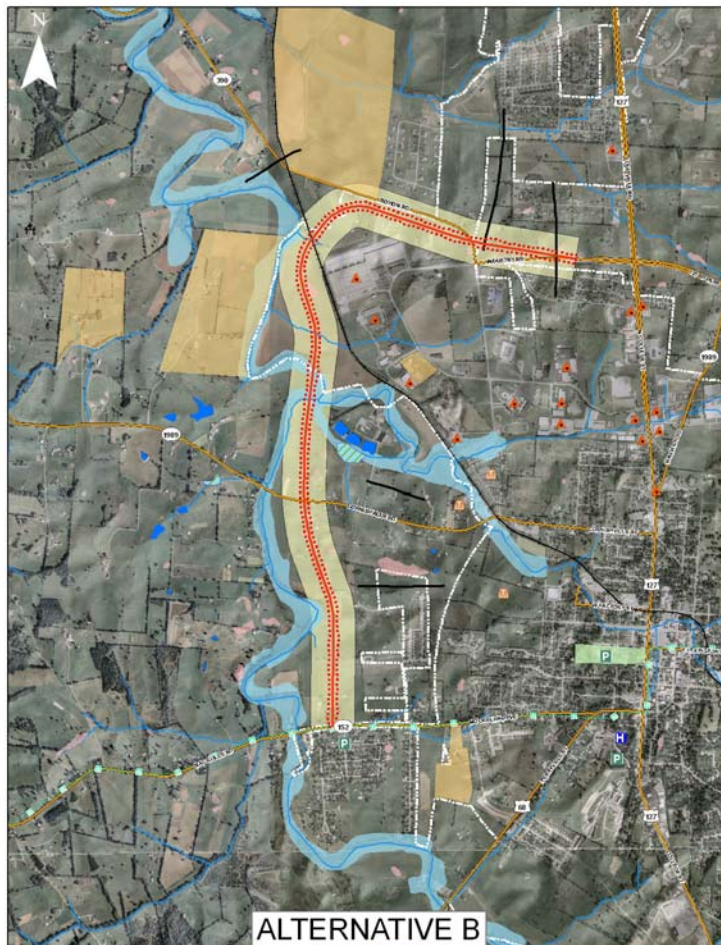


Alternative B

Parks Potentially Impacted:	0
Historic Sites Potentially Impacted:	0
Acres of School Property Potentially Disturbed:	0.0
Prime Farmland Acres Potentially Impacted:	43
State Importance Farmland Acres Potentially Impacted:	42
Potential HAZMAT Impact:	None
Acres of Ponds Potentially Impacted:	0
Acres of Wetlands Potentially Impacted:	0
Acres of Floodplains Potentially Impacted:	3.5
Number of Streams Potentially Crossed:	5
Potential Length of Stream Crossings (Approximate):	1,100 feet
Number of Geologic Faults Potentially Crossed:	2
Number of Sinkholes Potentially Impacted:	2
Estimated Cost:	\$36.5 million

Satisfaction of Project Goals:

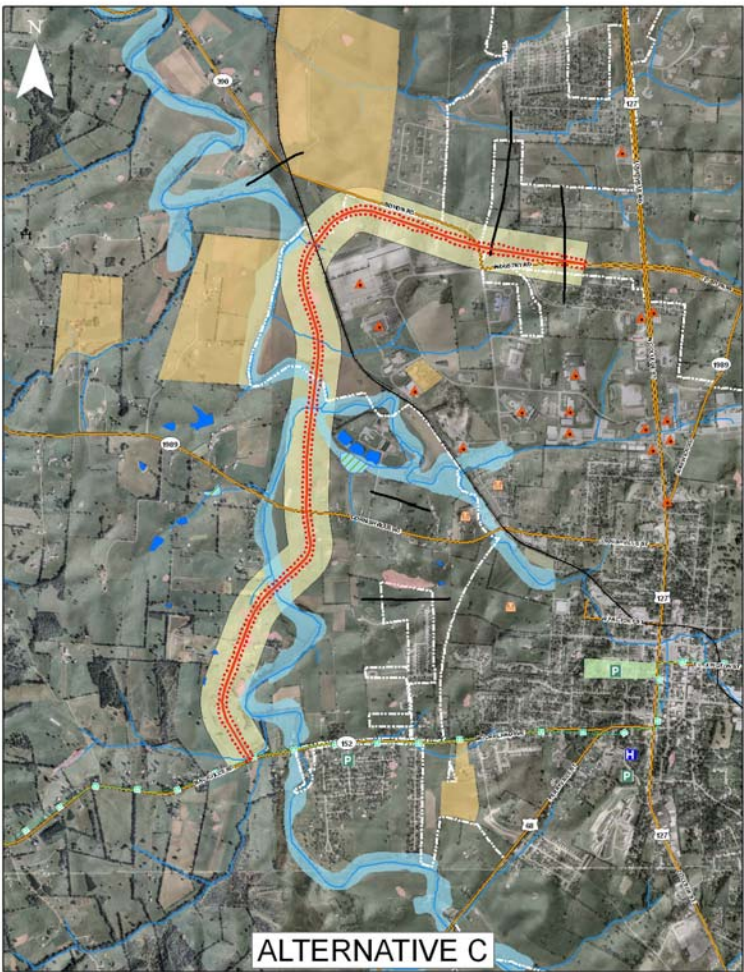
- Separate School and Industry Traffic: Good
- Emergency Response Time to Haggin Hospital: Fair
- Grade Separated RR Crossing: Excellent
- Reduce Congestion on Existing Area Roadways: Fair to Poor
- Compatible with Future Possible Southwest Extension: Poor



Alternative C

Parks Potentially Impacted:	0
Historic Sites Potentially Impacted:	0
Acres of School Property Potentially Disturbed:	0
Prime Farmland Acres Potentially Impacted:	37
State Importance Farmland Acres Potentially Impacted:	42
Potential HAZMAT Impact:	None
Acres of Ponds Potentially Impacted:	0
Acres of Wetlands Potentially Impacted:	0
Acres of Floodplains Potentially Impacted:	5.7
Number of Streams Potentially Crossed:	6
Potential Length of Stream Crossings (Approximate):	1,300 feet
Number of Geologic Faults Potentially Crossed:	2
Number of Sinkholes Potentially Impacted:	4
Estimated Cost:	\$40.8 million

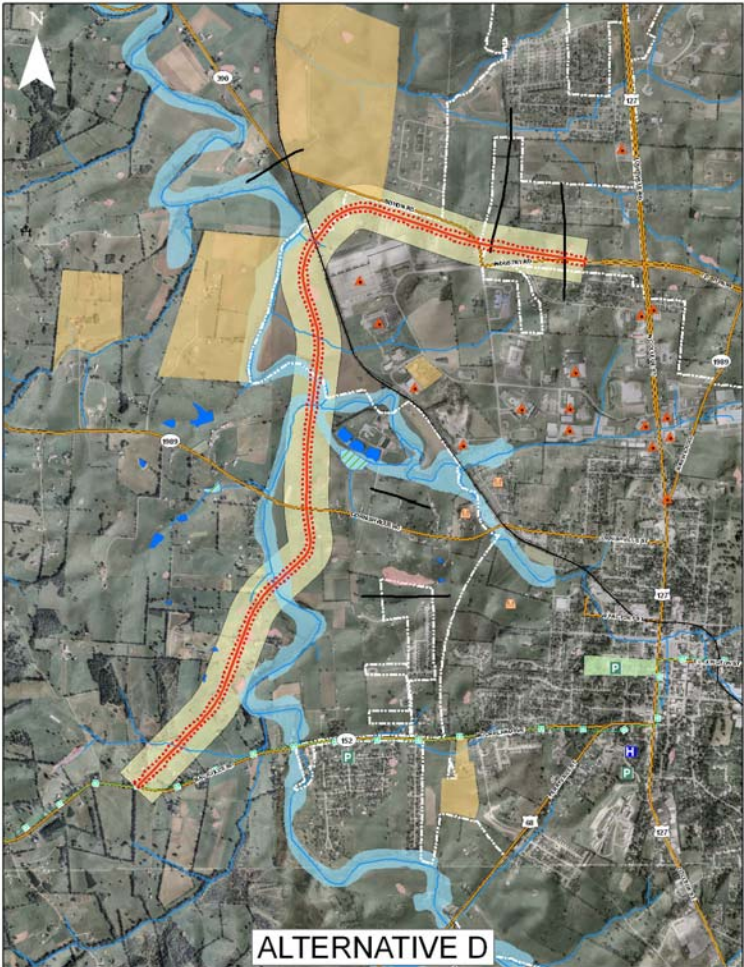
- Satisfaction of Project Goals:
- Separate School and Industry Traffic: Good
 - Emergency Response Time to Haggin Hospital: Poor
 - Grade Separated RR Crossing: Excellent
 - Reduce Congestion on Existing Area Roadways: Fair to Poor
 - Compatible with Future Possible Southwest Extension: Excellent



Alternative D

Parks Potentially Impacted:	0
Historic Sites Potentially Impacted:	0
Acres of School Property Potentially Disturbed:	0
Prime Farmland Acres Potentially Impacted:	37
State Importance Farmland Acres Potentially Impacted:	45
Potential HAZMAT Impact:	None
Acres of Ponds Potentially Impacted:	0
Acres of Wetlands Potentially Impacted:	0
Acres of Floodplains Potentially Impacted:	5.7
Number of Streams Potentially Crossed:	6
Potential Length of Stream Crossings (Approximate):	1,400 feet
Number of Geologic Faults Potentially Crossed:	2
Number of Sinkholes Potentially Impacted:	4
Estimated Cost:	\$46.0 million

- Satisfaction of Project Goals:
- Separate School and Industry Traffic: Good
 - Emergency Response Time to Haggin Hospital: Poor
 - Grade Separated RR Crossing: Excellent
 - Reduce Congestion on Existing Area Roadways: Fair to Poor
 - Compatible with Future Possible Southwest Extension: Excellent

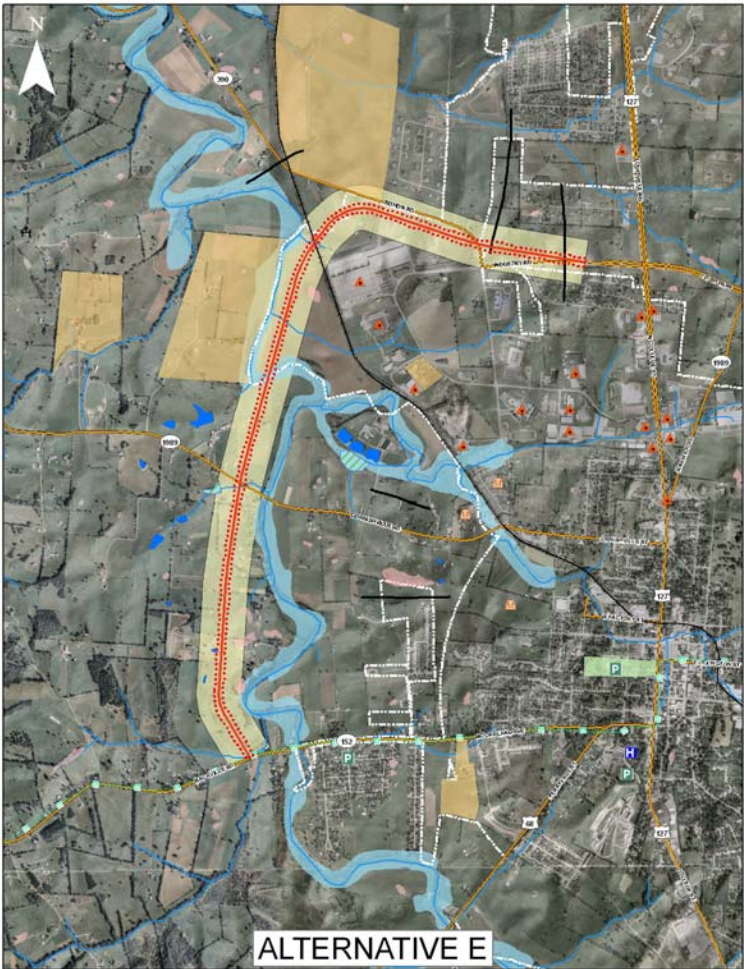


Alternative E

Parks Potentially Impacted:	0
Historic Sites Potentially Impacted:	0
Acres of School Property Potentially Disturbed:	0
Prime Farmland Acres Potentially Impacted:	16
State Importance Farmland Acres Potentially Impacted:	36
Potential HAZMAT Impact:	None
Acres of Ponds Potentially Impacted:	0.02
Acres of Wetlands Potentially Impacted:	0
Acres of Floodplains Potentially Impacted:	1.8
Number of Streams Potentially Crossed:	5
Potential Length of Stream Crossings (Approximate):	1,900 feet
Number of Geologic Faults Potentially Crossed:	2
Number of Sinkholes Potentially Impacted:	0
Estimated Cost:	\$30.0 million

Satisfaction of Project Goals:

- Separate School and Industry Traffic: Good
- Emergency Response Time to Haggin Hospital: Poor
- Grade Separated RR Crossing: Excellent
- Reduce Congestion on Existing Area Roadways: Fair to Poor
- Compatible with Future Possible Southwest Extension: Excellent

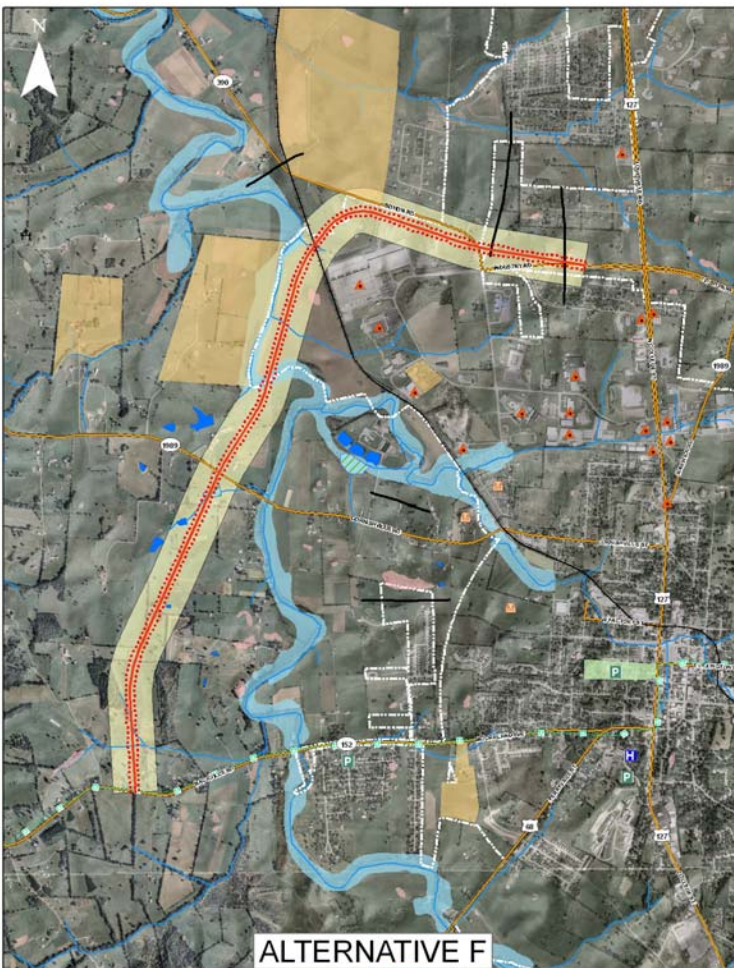


Alternative F

Parks Potentially Impacted:	0
Historic Sites Potentially Impacted:	0
Acres of School Property Potentially Disturbed:	0
Prime Farmland Acres Potentially Impacted:	23
State Importance Farmland Acres Potentially Impacted:	35
Potential HAZMAT Impact:	None
Acres of Ponds Potentially Impacted:	0
Acres of Wetlands Potentially Impacted:	0.4
Acres of Floodplains Potentially Impacted:	1.7
Number of Streams Potentially Crossed:	6
Potential Length of Stream Crossings (Approximate):	2,200 feet
Number of Geologic Faults Potentially Crossed:	2
Number of Sinkholes Potentially Impacted:	1
Estimated Cost:	\$30.9 million

Satisfaction of Project Goals:

- Separate School and Industry Traffic: Good
- Emergency Response Time to Haggin Hospital: Poor
- Grade Separated RR Crossing: Excellent
- Reduce Congestion on Existing Area Roadways: Fair to Poor
- Compatible with Future Possible Southwest Extension: Excellent

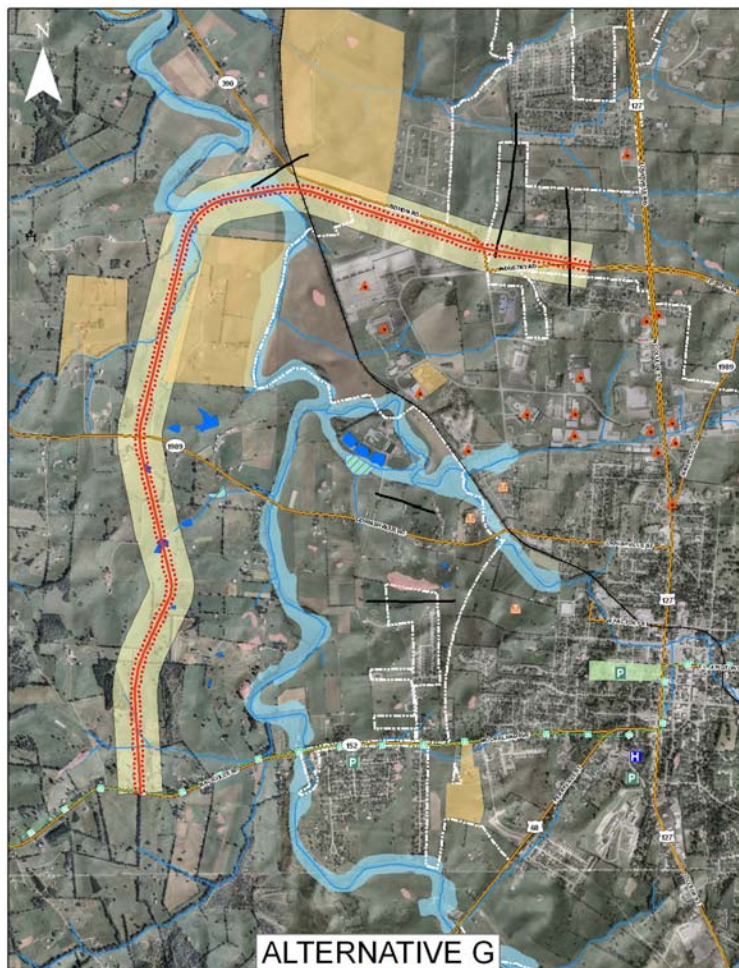


Alternative G

Parks Potentially Impacted:	0
Historic Sites Potentially Impacted:	0
Acres of School Property Potentially Disturbed:	0
Prime Farmland Acres Potentially Impacted:	22
State Importance Farmland Acres Potentially Impacted:	40
Potential HAZMAT Impact:	None
Acres of Ponds Potentially Impacted:	1.1
Acres of Wetlands Potentially Impacted:	0
Acres of Floodplains Potentially Impacted:	11.5
Number of Streams Potentially Crossed:	6
Potential Length of Stream Crossings (Approximate):	1,800 feet
Number of Geologic Faults Potentially Crossed:	2
Number of Sinkholes Potentially Impacted:	1
Estimated Cost:	\$37.3 million

Satisfaction of Project Goals:

- Separate School and Industry Traffic:..... Excellent
- Emergency Response Time to Haggin Hospital: Poor
- Grade Separated RR Crossing: Excellent
- Reduce Congestion on Existing Area Roadways: Poor
- Compatible with Future Possible Southwest Extension:..... Excellent

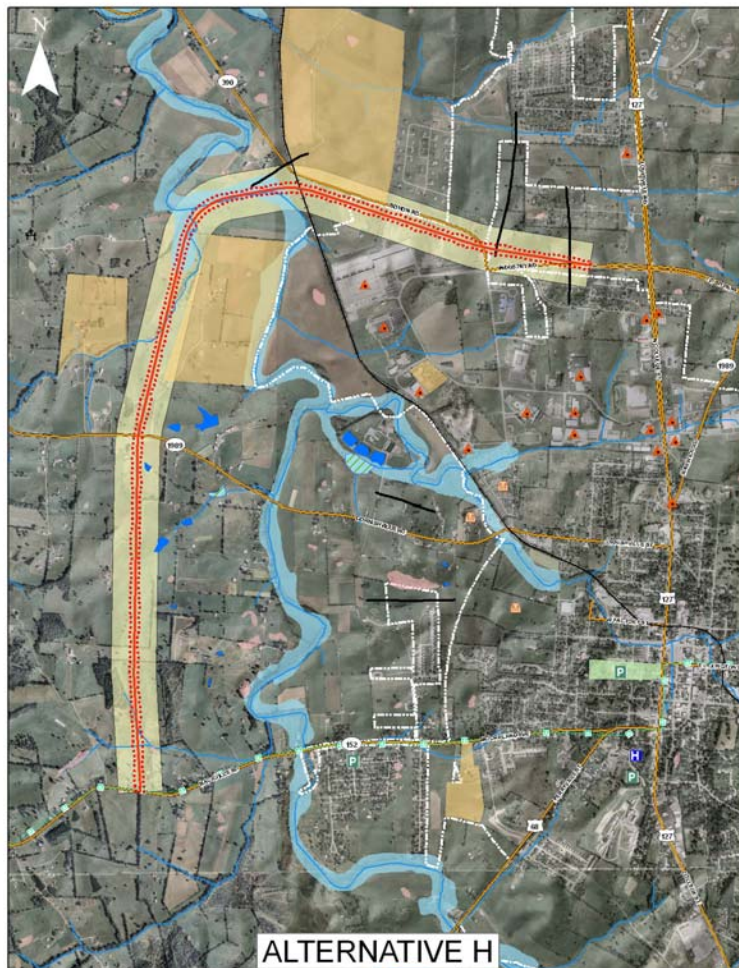


Alternative H

Parks Potentially Impacted:	0
Historic Sites Potentially Impacted:	0
Acres of School Property Potentially Disturbed:	0
Prime Farmland Acres Potentially Impacted:	30
State Importance Farmland Acres Potentially Impacted:	60
Potential HAZMAT Impact:	None
Acres of Ponds Potentially Impacted:	0
Acres of Wetlands Potentially Impacted:	0
Acres of Floodplains Potentially Impacted:	12.4
Number of Streams Potentially Crossed:	6
Potential Length of Stream Crossings (Approximate):	3,900 feet
Number of Geologic Faults Potentially Crossed:	2
Number of Sinkholes Potentially Impacted:	0
Estimated Cost:	\$37.0 million

Satisfaction of Project Goals:

- Separate School and Industry Traffic: Excellent
- Emergency Response Time to Haggin Hospital: Poor
- Grade Separated RR Crossing: Excellent
- Reduce Congestion on Existing Area Roadways: Poor
- Compatible with Future Possible Southwest Extension: Excellent

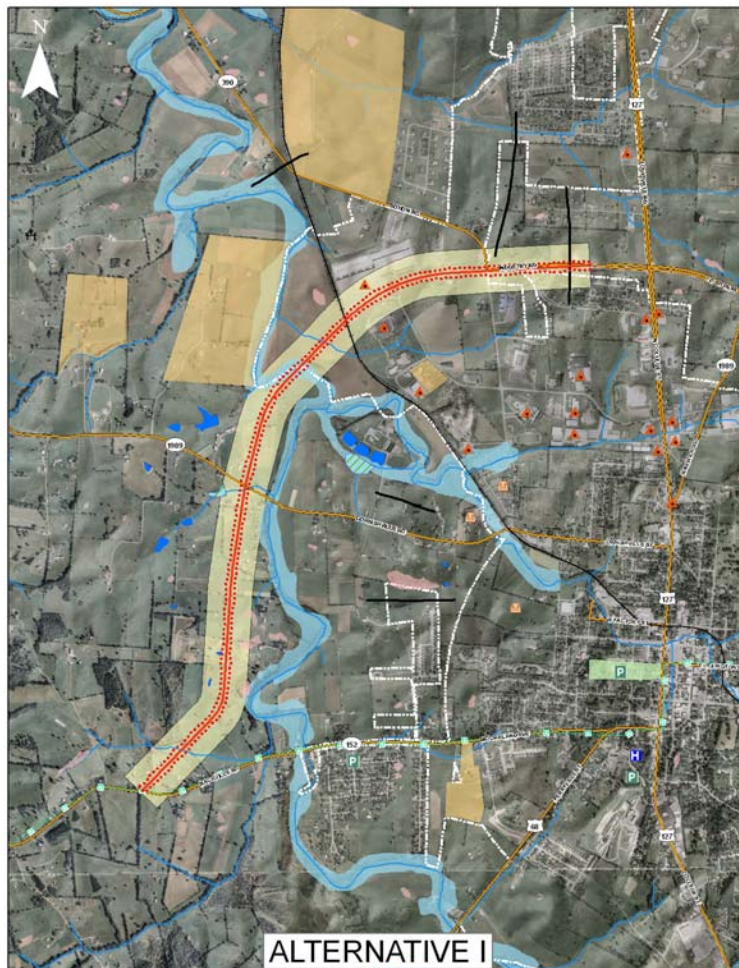


Alternative I

Parks Potentially Impacted:	0
Historic Sites Potentially Impacted:	0
Acres of School Property Potentially Disturbed:	1.3
Prime Farmland Acres Potentially Impacted:	9
State Importance Farmland Acres Potentially Impacted:	35
Potential HAZMAT Impact:	None
Acres of Ponds Potentially Impacted:	0.1
Acres of Wetlands Potentially Impacted:	0
Acres of Floodplains Potentially Impacted:	2.8
Number of Streams Potentially Crossed:	4
Potential Length of Stream Crossings (Approximate):	1,000 feet
Number of Geologic Faults Potentially Crossed:	1
Number of Sinkholes Potentially Impacted:	0
Estimated Cost:	\$29.1 million

Satisfaction of Project Goals:

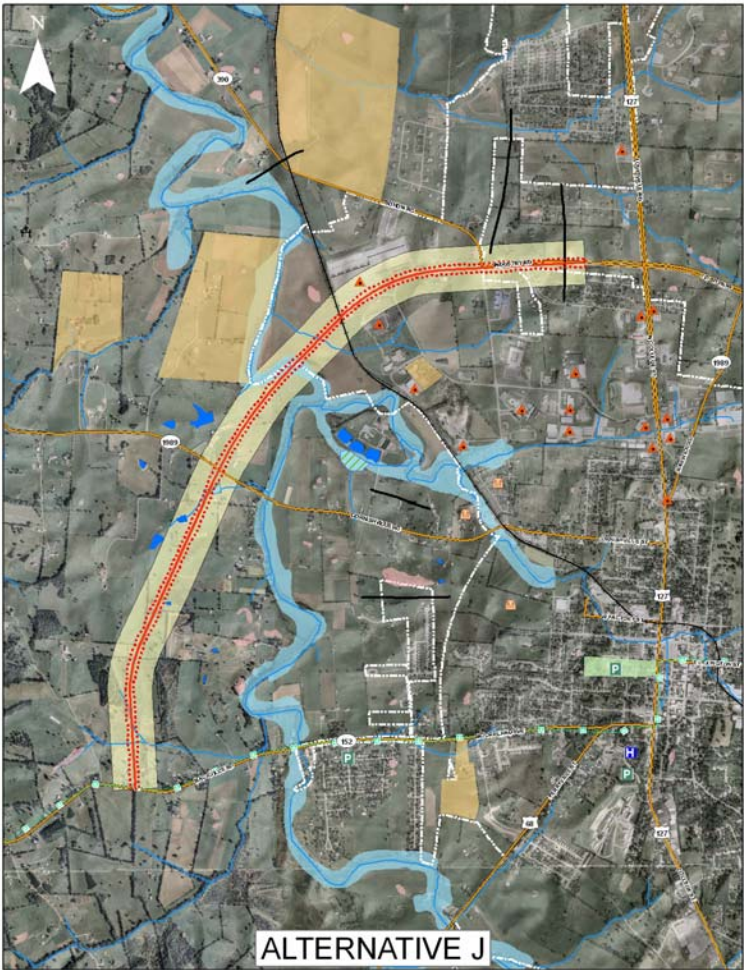
- Separate School and Industry Traffic: Good
- Emergency Response Time to Haggin Hospital: Poor
- Grade Separated RR Crossing: Excellent
- Reduce Congestion on Existing Area Roadways: Fair to Poor
- Compatible with Future Possible Southwest Extension: Excellent



Alternative J

Parks Potentially Impacted:	0
Historic Sites Potentially Impacted:	0
Acres of School Property Potentially Disturbed:	1.3
Prime Farmland Acres Potentially Impacted:	17
State Importance Farmland Acres Potentially Impacted:	32
Potential HAZMAT Impact:	None
Acres of Ponds Potentially Impacted:	0
Acres of Wetlands Potentially Impacted:	0.4
Acres of Floodplains Potentially Impacted:	2.7
Number of Streams Potentially Crossed:	5
Potential Length of Stream Crossings (Approximate):	1,800 feet
Number of Geologic Faults Potentially Crossed:	1
Number of Sinkholes Potentially Impacted:	1
Estimated Cost:	\$29.3 million

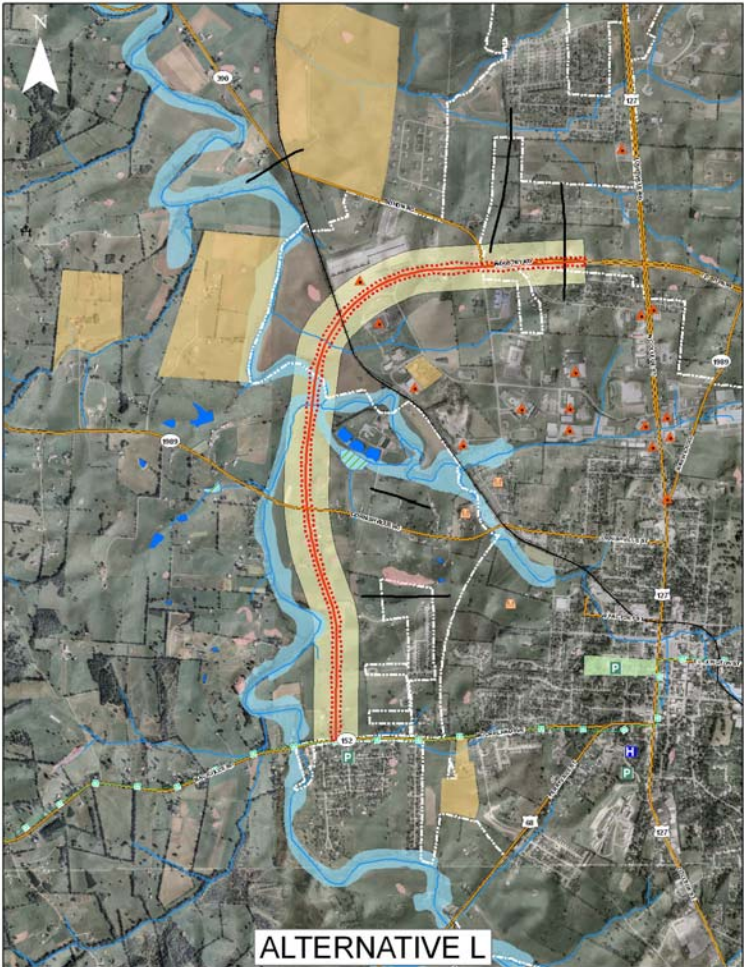
- Satisfaction of Project Goals:
- Separate School and Industry Traffic: Good
 - Emergency Response Time to Haggin Hospital: Poor
 - Grade Separated RR Crossing: Excellent
 - Reduce Congestion on Existing Area Roadways: Fair to Poor
 - Compatible with Future Possible Southwest Extension: Excellent



Alternative L

Parks Potentially Impacted:	0
Historic Sites Potentially Impacted:	0
Acres of School Property Potentially Disturbed:	0.9
Prime Farmland Acres Potentially Impacted:	37
State Importance Farmland Acres Potentially Impacted:	37
Potential HAZMAT Impact:	None
Acres of Ponds Potentially Impacted:	0
Acres of Wetlands Potentially Impacted:	0
Acres of Floodplains Potentially Impacted:	3.8
Number of Streams Potentially Crossed:	4
Potential Length of Stream Crossings (Approximate):	1,000 feet
Number of Geologic Faults Potentially Crossed:	1
Number of Sinkholes Potentially Impacted:	1
Estimated Cost:	\$37.4 million

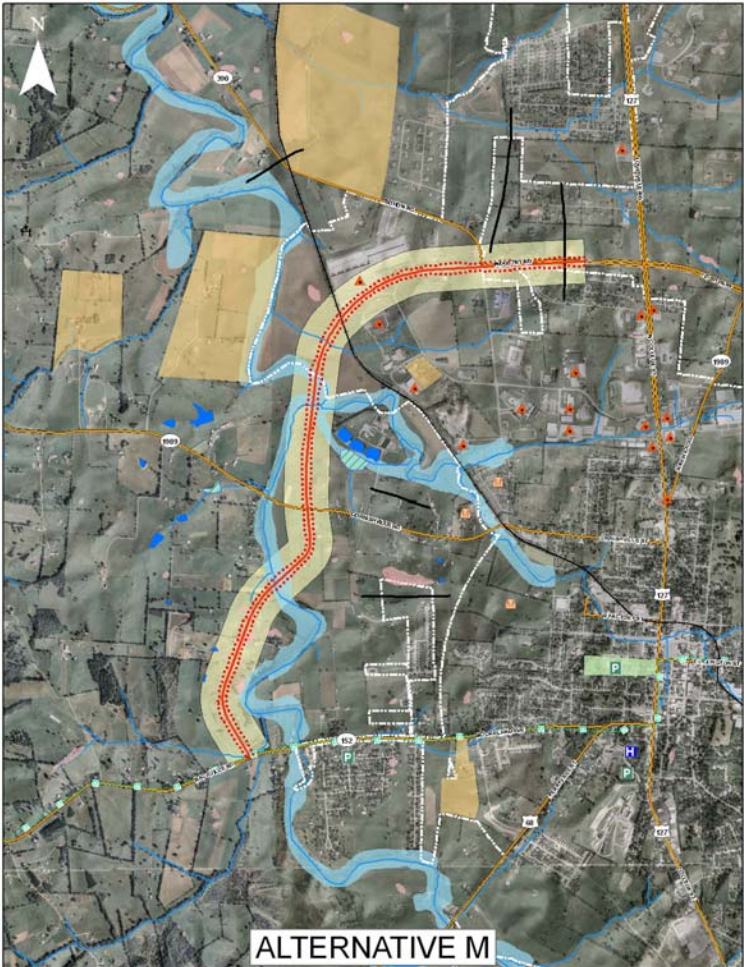
- Satisfaction of Project Goals:
- Separate School and Industry Traffic: Good
 - Emergency Response Time to Haggin Hospital: Fair
 - Grade Separated RR Crossing: Excellent
 - Reduce Congestion on Existing Area Roadways: Fair to Poor
 - Compatible with Future Possible Southwest Extension: Poor



Alternative M

Parks Potentially Impacted:	0
Historic Sites Potentially Impacted:	0
Acres of School Property Potentially Disturbed:	0.9
Prime Farmland Acres Potentially Impacted:	31
State Importance Farmland Acres Potentially Impacted:	37
Potential HAZMAT Impact:	None
Acres of Ponds Potentially Impacted:	0
Acres of Wetlands Potentially Impacted:	0
Acres of Floodplains Potentially Impacted:	6.8
Number of Streams Potentially Crossed:	5
Potential Length of Stream Crossings (Approximate):	1300 feet
Number of Geologic Faults Potentially Crossed:	1
Number of Sinkholes Potentially Impacted:	3
Estimated Cost:	\$40.1 million

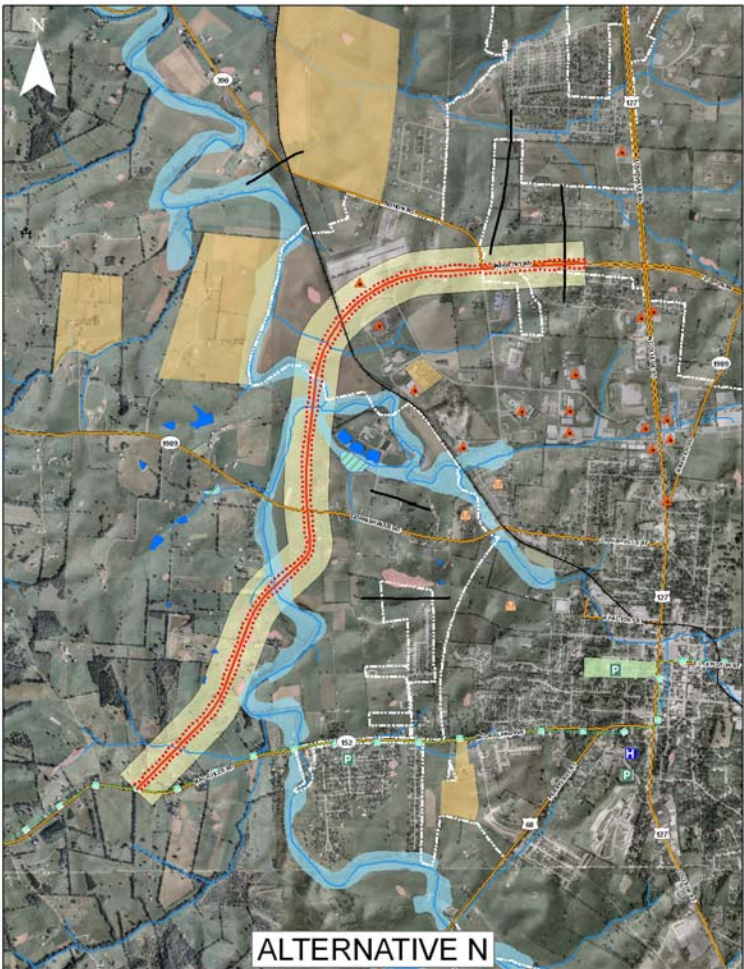
- Satisfaction of Project Goals:
- Separate School and Industry Traffic: Good
 - Emergency Response Time to Haggin Hospital: Poor
 - Grade Separated RR Crossing: Excellent
 - Reduce Congestion on Existing Area Roadways: Fair to Poor
 - Compatible with Future Possible Southwest Extension: Excellent



Alternative N

Parks Potentially Impacted:	0
Historic Sites Potentially Impacted:	0
Acres of School Property Potentially Disturbed:	0.9
Prime Farmland Acres Potentially Impacted:	31
State Importance Farmland Acres Potentially Impacted:	40
Potential HAZMAT Impact:	None
Acres of Ponds Potentially Impacted:	0
Acres of Wetlands Potentially Impacted:	0
Acres of Floodplains Potentially Impacted:	6.8
Number of Streams Potentially Crossed:	5
Potential Length of Stream Crossings (Approximate):	1,400 feet
Number of Geologic Faults Potentially Crossed:	1
Number of Sinkholes Potentially Impacted:	3
Estimated Cost:	\$42.4 million

- Satisfaction of Project Goals:
- Separate School and Industry Traffic: Good
 - Emergency Response Time to Haggin Hospital: Poor
 - Grade Separated RR Crossing: Excellent
 - Reduce Congestion on Existing Area Roadways: Fair to Poor
 - Compatible with Future Possible Southwest Extension: Excellent

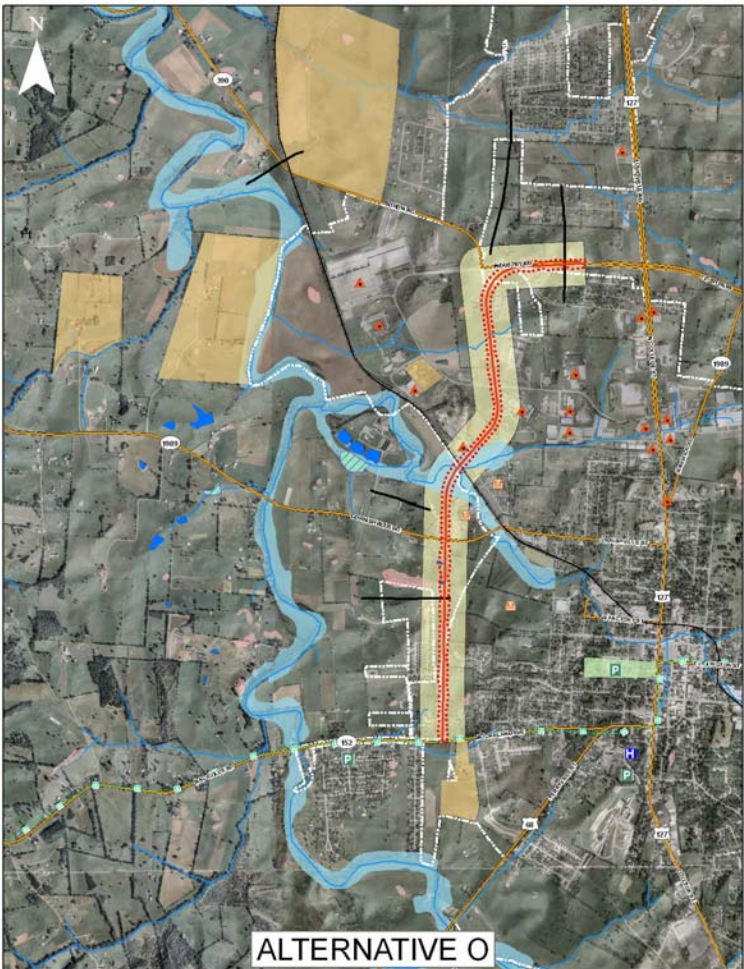


Alternative O

Parks Potentially Impacted:	0
Historic Sites Potentially Impacted:	0
Acres of School Property Potentially Disturbed:	6.0
Prime Farmland Acres Potentially Impacted:	6
State Importance Farmland Acres Potentially Impacted:	30
Potential HAZMAT Impact:	Groundwater contamination (trichloroethylene-TCE)
Acres of Ponds Potentially Impacted:	0.3
Acres of Wetlands Potentially Impacted:	0
Acres of Floodplains Potentially Impacted:	5.9
Number of Streams Potentially Crossed:	3
Potential Length of Stream Crossings (Approximate):	500 feet
Number of Geologic Faults Potentially Crossed:	2
Number of Sinkholes Potentially Impacted:	0
Estimated Cost:	\$21.9 million

Satisfaction of Project Goals:

- Separate School and Industry Traffic: Poor
- Emergency Response Time to Haggin Hospital: Excellent
- Grade Separated RR Crossing: Excellent
- Reduce Congestion on Existing Area Roadways: Fair to Good
- Compatible with Future Possible Southwest Extension: Fair

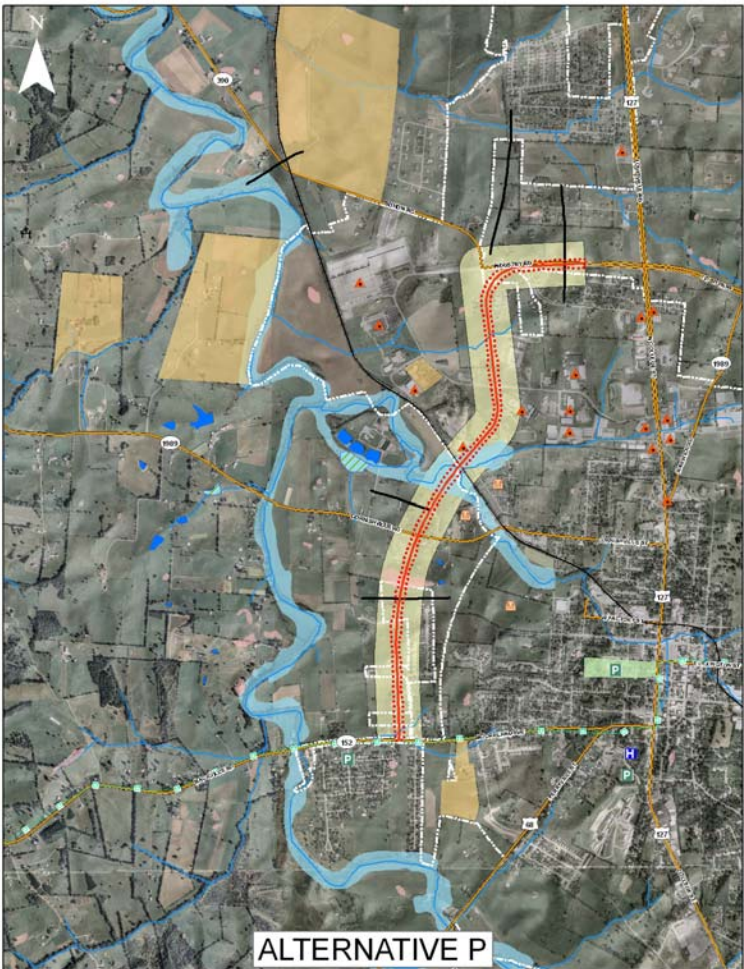


Alternative P

Parks Potentially Impacted:	0
Historic Sites Potentially Impacted:	0
Acres of School Property Potentially Disturbed:	6.0
Prime Farmland Acres Potentially Impacted:	6
State Importance Farmland Acres Potentially Impacted:	31
Potential HAZMAT Impact:	Groundwater contamination (trichloroethylene-TCE)
Acres of Ponds Potentially Impacted:	0
Acres of Wetlands Potentially Impacted:	0
Acres of Floodplains Potentially Impacted:	6.1
Number of Streams Potentially Crossed:	5
Potential Length of Stream Crossings (Approximate):	900 feet
Number of Geologic Faults Potentially Crossed:	3
Number of Sinkholes Potentially Impacted:	2
Estimated Cost:	\$21.7 million

Satisfaction of Project Goals:

- Separate School and Industry Traffic: Poor
- Emergency Response Time to Haggin Hospital: Good
- Grade Separated RR Crossing: Excellent
- Reduce Congestion on Existing Area Roadways: Fair to Good
- Compatible with Future Possible Southwest Extension: Poor



Alternative Q

Parks Potentially Impacted:	0
Historic Sites Potentially Impacted:	0
Acres of School Property Potentially Disturbed:	7.8
Prime Farmland Acres Potentially Impacted:	12
State Importance Farmland Acres Potentially Impacted:	31
Potential HAZMAT Impact:	None
Acres of Ponds Potentially Impacted:	0
Acres of Wetlands Potentially Impacted:	0
Acres of Floodplains Potentially Impacted:	2.6
Number of Streams Potentially Crossed:	3
Potential Length of Stream Crossings (Approximate):	700 feet
Number of Geologic Faults Potentially Crossed:	1
Number of Sinkholes Potentially Impacted:	0
Estimated Cost:	\$22.8 million

- Satisfaction of Project Goals:
- Separate School and Industry Traffic: Poor
 - Emergency Response Time to Haggin Hospital: Excellent
 - Grade Separated RR Crossing: Excellent
 - Reduce Congestion on Existing Area Roadways: Fair to Good
 - Compatible with Future Possible Southwest Extension: Fair

